



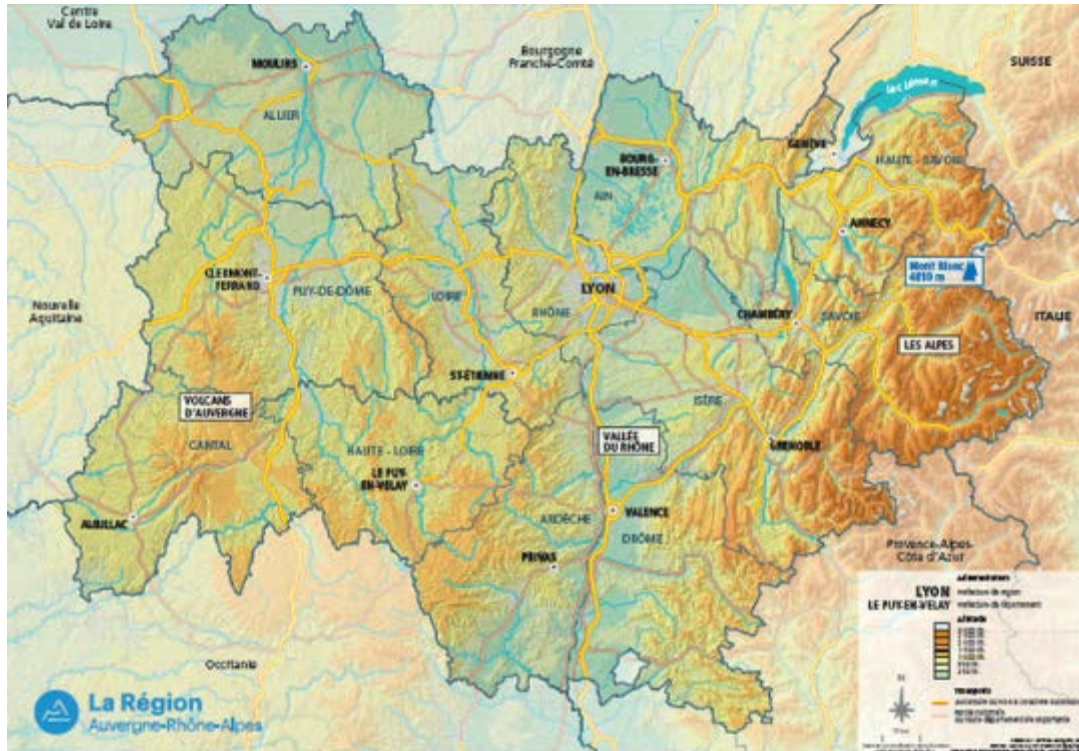
18th-23th March 2020

Famtrip RENDEZ-VOUS-EN-FRANCE

UNESCO & VOLCANS

Vichy – Clermont-Fd– Lyon





An easily accessible region



BY PLANE:

- Lyon-Saint-Exupéry international airport: www.lyonaeroports.com
- Geneva international airport: www.gva.ch
- Clermont-Ferrand Auvergne international airport: www.clermont-aeroport.com

Two airports for the winter season:

- Chambéry Savoie airport: www.chambery-airport.com
- Grenoble Isère airport: www.grenoble-airport.com



BY TRAIN:

International transport services – High-speed trains

- Thalys and TGV from Brussels to Lyon: 3hrs 45mins
- TGV from Geneva to Lyon: 1hr 45mins
- TGV: Paris-Lyon: 2hrs (30 TGVs daily)

TGV from Paris to ski resorts during the winter season:

Moûtiers, Bourg St Maurice, Saint-Gervais, Sallanches.

International lines: www.oui.sncf

Regional express trains: www.ter-sncf.com



BY ROAD:

More than 1300 km of motorway make Auvergne-Rhône-Alpes one of the most easily accessible regions in France:

www.viamichelin.fr

10 GOOD REASONS TO CHOOSE AUVERGNE-RHÔNE-ALPES

NEED FOR SPEED?

Enjoy some full-on winter fun with the whole family!

Auvergne-Rhône-Alpes is the world's top destination for skiing, with 173 resorts for downhill and Nordic skiing. From vast interconnected resorts to small villages, there's something for everyone.



NATURE LOVER?

Marvel at unique protected landscapes!

A veritable paradise for nature lovers, with 30 regional parks, 2 national parks (La Vanoise and Les Ecrins) and no fewer than 49 nature reserves (32 national and 17 regional) for unforgettable experiences.



FASCINATION FOR LAKES?

Discover the shores and dive into the deep blue water of our many lakes!

Nestled at the heart of the Alps, the region is home to 3 of France's 5 biggest lakes: Lac Léman (Geneva), Lac du Bourget and Lac d'Annecy.



JOURNEY TO VOLCANO SUMMITS?

Discover the region's iconic volcanoes!

Le Puy de Dôme (1465 m), with exceptional views over the Chaîne des Puys and Limagne fault, a tectonic hotspot and the first natural site in metropolitan France to receive UNESCO World Heritage status, Le Puy Mary (1797 m), Europe's highest stratovolcano, and Le Puy de Sancy (9886 m), the highest point in the Massif Central.

FAN OF THE OUTDOORS?

Discover Europe's biggest natural playground!

With 12 cycleways and greenways, 17 major trails for hiking, cycling, mountain biking or horse-riding, 13,500 km of GR-GR® trails and 79 mountain biking centres for your sporting pleasure.



NEED TO PAMPER YOURSELF?

Surprise yourself with the wonderful benefits of thermal springs!

Indulge yourself in a world of relaxation at one of our 24 spa resorts. These include world-renowned Vichy and Evian.



CITY BREAK ADDICT?

Go with the flow in the unique ambience of our region's cities!

You're spoilt for choice in Lyon with its historic UNESCO World Heritage city centre, Clermont-Ferrand which lies at the foot of the region's many volcanoes, Grenoble and Chambéry hemmed in by the Alps, Saint-Etienne, a city with a design focus, Valence, a land of Art and History, and Le Puy-en-Velay, a city of pilgrims, to name but a few!



SHOWTIME!

Follow the pulsating rhythm of local festivals!

From design in Saint-Etienne and animated films in Annecy to street theatre in Aurillac, short films in Clermont-Ferrand and the festival of lights in Lyon...

The region's most visited cultural locations in 2017:

| | |
|---|------------------|
| Musée des Confluences www.museedesconfluences.fr | 723,600 visitors |
| Caverne du Pont d'Arc www.cavernedupontdarc.fr | 418,000 visitors |
| Musée des Beaux-Arts de Lyon www.mba-lyon.fr/mba | 356,000 visitors |
| Musée miniature et cinéma de Lyon www.museeminatureetcinema.fr | 211,000 visitors |
| Musée de Grenoble www.museedegrenoble.fr | 185,000 visitors |
| Palais idéal du Facteur Cheval www.facteurcheval.com | 177,800 visitors |
| Château de Murot murokchateau.com | 130,000 visitors |
| Château-musée d'Annecy musees.agglo-annecy.fr | 125,100 visitors |
| Château de Grignan www.chateaux-la-drome.fr/fr/chateau-de-grignan | 119,300 visitors |
| Musée d'Art Contemporain de Lyon www.mac-lyon.com | 118,900 visitors |
| Monastère Royal de Brou www.monastere-de-brou.fr | 97,100 visitors |

List of participants

20 TO Maximum :

- Canada x 4

- Japon x 4

- UK x 3

- De x 3

- BE x 3

- NL x 3

- 1 Auvergne-Rhône-Alpes Tourism board
- 1 driver

‡ Do not forget your swimsuit, backpack, Kway, fleece jacket, comfortable shoes and a chic outfit ...

Wednesday 18 th of March

Arrival Day
Transfer from Paris to
Vichy train station

Overnight in Vichy



Thursday 19th of March VICHY

Free Morning

Vichy is : Prestigious opera, art nouveau, spas, luxurious neighbourhoods, parks and gardens , racecourse, golf, fashion boutiques and an incomparable setting ...

Visit of Vichy city, under the angle of UNESCO candidature *Great Spas of Europe*

Elegant diner in Vichy, with local and french gastronomy

Overnight in Vichy , hotel *les Nations*



Friday 20th of March Clermont-Ferrand – Volcans

The history of Clermont-Ferrand can be traced back 2000 years and has an abundantly rich heritage to prove it. Its mediaeval and Renaissance architecture dazzles visitors in both the historic centre of Clermont and the centre of Montferrand.

The Romanesque basilica of Notre-Dame-du-Port, a gem of Auvergnat Romanesque art, enjoys UNESCO World Heritage status as part of Saint James's Way.

The unique Gothic cathedral in anthracite lava stone dominates the city with its imposing form.

Diner in Clermont-Fd, with local and french gastronomy

Overnight in Clermont-Fd



Saturday 21th of March Clermont-Ferrand – Volcans

The Parc Naturel Régional des Volcans d’Auvergne, a unique jewel in the crown of Europe and home to a tectonic hotspot in the shape of the Chaîne des Puys and the Limagne fault, was recognised in July 2018 by UNESCO as an exceptional geological site.

Le Puy de Dôme, the most famous of the sleeping giants volcanoes and officially awarded “Grand Site de France®” status, tops out at 1465 m, with unequalled panoramic views across the 80 volcanoes of the Chaîne des Puys. Its summit can be accessed in both winter and summer via the “Panoramique des Dômes” rack railway.

Diner in Clermont-Fd, with local and french gastronomy

Overnight in Clermont-Fd



Sunday 22th of March LYON

Lyon, one of Europe's great meeting points at the confluence of the Rhône and Saône rivers, is a key destination due to its architectural wealth and reputation for fine dining. The city is home to many areas of interest, including its historic centre with UNESCO World Heritage status, plus a wide variety of sites spanning 2000 years of civilisation,

Lyon, world gastronomy capital, is home to the "Cité Internationale de la Gastronomie" since October 2019.

Diner in Lyon, with local and french gastronomy

Overnight in Lyon



Monday 23th of March

Morning : Lyon

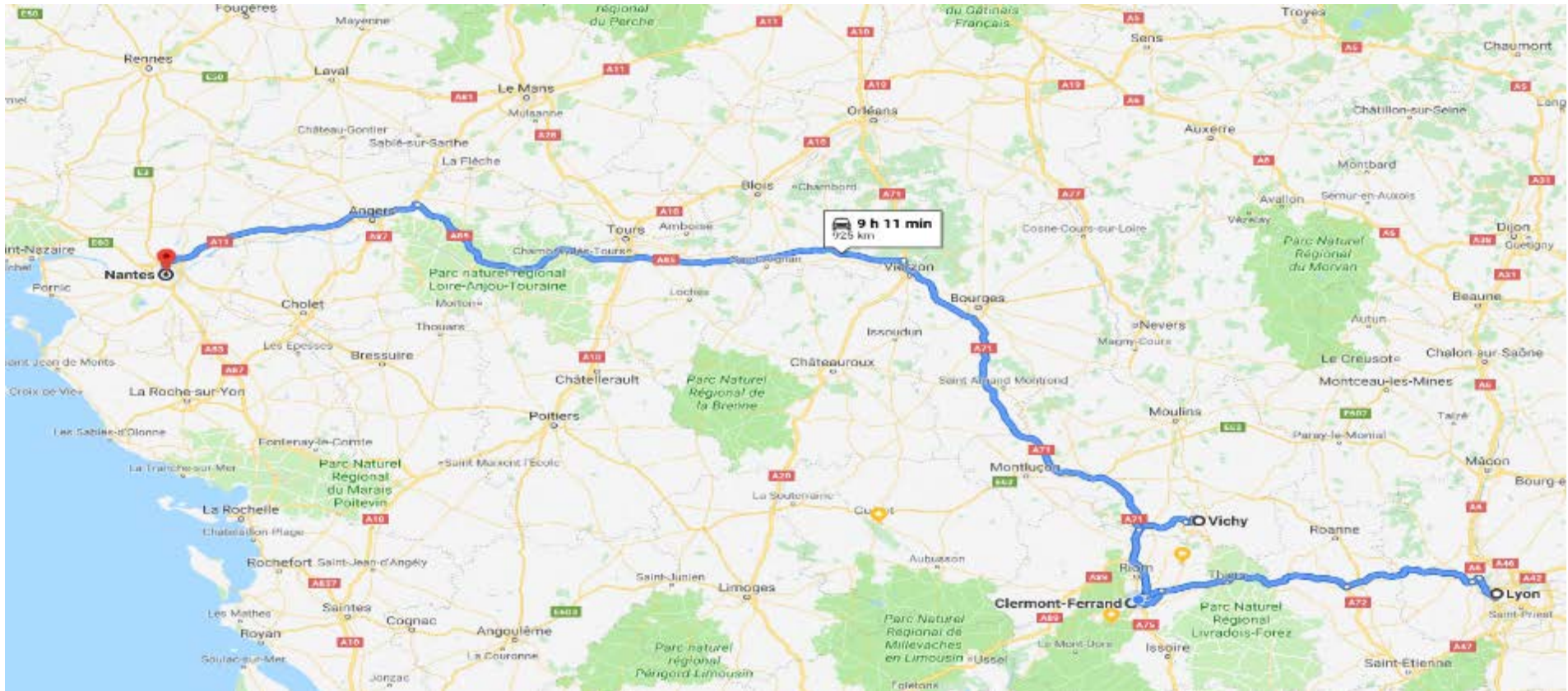
Quick lunch

Flight from Lyon to Nantes (1h20)

Arrival in Nantes before 5:00 pm



ITINERARY DURING YOUR STAY



USEFUL CONTACTS

Vichy Destinations, tourism board

Brigitte Renzo

Trade manager

0033 4 70 97 18 94

b.renzo@vichydestinations.fr

Clermont-Ferrand-Auvergne Tourism board

Céline Hergat

Trade manager

0033 4 73 98 64 90

chergat-tourisme@clermont-fd.com

Lyon Tourism board

Eleonore Delenne

Trade manager

edelenne@lyon-france.com

033 6 30 29 57 54

Irène Tronchet
Auvergne-Rhône-Alpes Tourism Board

+33 4 73 29 49 45
+33 6 79 14 32 12

i.tronchet@auvergnerhonealpes-tourisme.com



auvergnetourisme
auvergnerhonealpestourisme



@auvergne
@RDV_Experience



@auvergnetourisme
@auvergnerhonealpes.tourisme



www.inauvergnerhonealpes.com/en/

